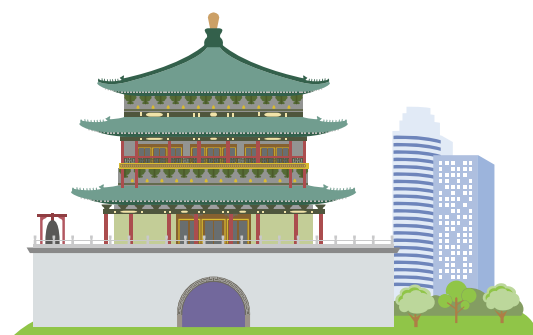


# CHANG'AN UNIVERSITY ADMISSION BROCHURE



長安大學  
CHANG'AN UNIVERSITY



## Xi'an, China

Xi'an, the capital city of Shaanxi Province, is located in the middle of the Guanzhong Plain in Yellow River Basin in the hinterland of China. It is the important central city for western China and a famous historical and cultural city in the world.

### Overview of Xi'an

Xi'an, which was called Chang'an in ancient times, has a long history, including over 3,100 years of city history and over 1,100 years of capital history during which it was the capital of thirteen dynasties successively. It shares the equal frame of the four greatest ancient capitals of civilization in the world with Athens, Rome and Cairo. The Silk Road starts from here, west to ancient Rome.

With powerful science and technology, complete industry categories and increasingly mature city service system, Xi'an has become the important bases of scientific research, higher education, national defense technology and hi-tech industries in China and the centers of finance, science and technology, education, tourism and business in the middle and west of northern China.

Xi'an is a famous tourist and cultural city in China based on rich tourism resources. Lots of places of interest are favored by tourists, such as the famous Terra-cotta Warriors and Horses of Qin Shihuang Mausoleum, the Xi'an Circumvallation of Ming Dynasty and so on. There are 63 colleges and universities, 121 museums, 13 public libraries, 2 mass art museums, 14 cultural centers and 174 cultural stations in this city.

Xi'an is a livable city. Its climate belongs to the warm temperate semi-humid continental monsoon climate. There are four distinctive seasons in one year here. It's hot and rainy in summer, while cold and dry in winter. The annual average temperature is 13.1 to 13.4 °C. With the complete bus and subway network, the transportation here is convenient. And various delicious food is served here. Specifically, the nearly 300 kinds of special snacks make people linger in the Muslim Street, the famous food and culture block in Xi'an.

Here, you can touch the history and feel the modernization. Welcome to Xi'an!







# CONTENTS

S  
T  
U  
D  
E  
N  
T  
I  
N  
F  
O  
R  
M  
A  
T  
I  
O  
N

<b>01. INTRODUCTION OF CHANG'AN UNIVERSITY</b>	<b>02</b>
<b>02. CHINESE LANGUAGE PROGRAMS</b>	<b>03</b>
Long-Term Intensive Chinese Program	03
Short-Term Chinese Language And Culture Program	04
<b>03. CHINESE MEDIUM PROGRAMS</b>	<b>05</b>
Chinese-Medium Undergraduate Programs	05
Chinese-Medium Master Programs	09
Chinese-Medium Ph.D Programs	15
<b>04. ENGLISH MEDIUM PROGRAMS</b>	<b>18</b>
English-Medium Undergraduate Programs	18
English-Medium Master Programs	18
English-Medium Ph.D Programs	21
<b>05. SCHOLARSHIP</b>	<b>23</b>
Entrance Scholarship	23
Chinese Government Scholarship	
Shaanxi Automobile Holding SHACMAN International Student Scholarship	
University Students Scholarship	27
San Qin International Student Scholarship of Shaanxi Province	
Excellent International Student in China Scholarship of Chang'an University	
Shaanxi Automobile Holding SHACMAN International Student Scholarship	
<b>06. FEES</b>	<b>29</b>
<b>07. UNIVERSITY FACILITIES</b>	<b>30</b>
<b>08. APPLICATION PROCEDURE</b>	<b>31</b>









# 01

## INTRODUCTIONS OF CHANG'AN UNIVERSITY

Directly affiliated to the Ministry of Education of the People's Republic of China, Chang'an University is one of the State "211 Project" key development universities. It is concurrently one of the key development universities on the State "985" Project advantage discipline innovation platform. National first-class discipline construction Universities. In 2017, CAU passed the University Certification Pilot Program for Quality Certification in China.

Chang'an University is located in the historical and cultural city of Xi'an and covers an area of more than 3,755 mu (approximately 250 hectares). The university comprises two teaching campuses and two practice bases.

Through its 60 years of development, it has evolved into an influential comprehensive higher institution in China, with engineering as its main discipline focus, combining engineering with sciences, and with multidisciplinary development in economy, management and humanities. It has graduated more than 250,000 talents of different levels, mainly in the fields of highway transportation, land resources and environment and construction engineering. Chang'an University has 21 schools or departments, 26 provincial-level key disciplines, 8 post-doctoral research stations, 8 first-level and 52 second-level doctoral programs, 26 first-level and 122 second-level master programs, 40 undergraduate specialties. At present, the enrollment of full-time students in Chang'an University exceeds 34,000, of whom nearly 10,000 are doctoral and master postgraduates and international students. The employment rate of the graduates stays stably above 93%. Chang'an University now has 2,067 full-time teachers, including 3 academicians of Chinese Academy of Engineering, 6 "Yangtze River Scholar" chair professors, 1,145 full and associate professors, of whom 166 are doctoral supervisors, and 755 are master supervisors, 5 national and provincial level experts with outstanding contributions, and 80 teachers who have been enrolled on the advanced talent list of the "National Talent Project of the New Millennium" or have been entered in the advanced talent bank of Ministry of Education, Ministry of Transportation and Shaanxi Province. Striving along the route of combining teaching, scientific research and school-run industries, Its annual scientific research funds sum up to more than 700 million yuan.

The enrollment of international students commenced in 1956. Till now, the university has turned out nearly 4,000 graduates of different kinds for nearly 70 countries such as the United States, Germany, Japan, Australia, Vietnam, Tanzania and Yemen. The number of international students in university now is 713.

After years of long exploration and practice, Chang'an University has gradually formed its spirit of "self-improving constantly, seeking truth and being pragmatic, striving in unity and pursuing excellence" and earned its high social reputation. On this new historical stage, the university continues to adhere to the socialist theory with Chinese characteristics and strive along the path of connotation, characteristic and harmonious development so as to maximally improve its talent cultivation quality and build the university into a first-class tertiary institution with distinctive characteristics and remarkable strength in China.

# 02

## NON-DEGREE PROGRAMS OF CHINESE LANGUAGE AND CULTURE

### LONG-TERM INTENSIVE CHINESE PROGRAM



#### CHINESE COURSES

Beginners Course;  
Elementary Course;  
Intermediate Course;  
Advanced Course



#### DURATION

Long-Term: 1 semester or 1 academic year  
(Each academic year has two semesters);  
Short-Term: 1-2 months



#### APPLICATION DEADLINE

Fall Semester: July 5th  
Spring Semester: December 31th



#### TUITION

One month: 2,500 RMB  
One semester: 8,000 RMB  
One year: 14,000 RMB



#### COURSE HIGHLIGHTS

- Courses are taught in small classes of no more than 10 students by professional teachers.
- The learners' Chinese language level will be improved fast with the intensive courses and effective teaching methods.
- Chinese language courses, covering professional HSK training courses, can also help learners to pass HSK exams with a high scores.
- The course of Chinese characters and oral Chinese is arranged from beginner level to advanced level in order to improve Chinese level comprehensively.

COURSES	EXPECTED RESULTS	LANGUAGE COURSES (20-24 HOURS/WEEK)	CHINESE CULTURE COURSES	PRACTICAL COURSES
Beginners Course	Students are expected to know basic phonetic and tones, and use 600 - 800 words after completing this course. In addition, Students are able to comprehend basic language material which is closely related to daily life and/or study.	Comprehensive Chinese, Listening, Chinese Character, Reading.		
Elementary Course	Students will be able to use about 1,200 words and comprehend language material with a clearly expressed familiar content which is encountered on a general social occasion or in study. At the end of the course, students can deal with undergraduate courses (science and engineering) in university.	Comprehensive Chinese, Spoken Chinese, Listening, Chinese Character, Reading, Chinese of Science and Technology.	Calligraphy Paper cuttings Chinese Kungfu Chinese movies and music Special lecture of Chinese culture	Culture Experience Culture practice at museum, practice base, visit to historical sites
Intermediate Course	Students will be able to use about 2,500 words and have a good command over Chinese listening, reading and writing. At the end of the course, students can fulfill the requirement of learning arts major in university.	Comprehensive Chinese, Spoken Chinese, Chinese Character, Listening, Reading, Writing, and Business Chinese.		
Advanced Course	Students will be able to use more than 5,000 words and read Chinese newspapers, watch Chinese movies and listen to Chinese radio programs. Further, the language skills will enable students to be fully involved in social, cultural, academic and professional activities in China.	Comprehensive Chinese, Spoken Chinese, Chinese Character, Listening, Reading, Writing, Business Chinese, and Chinese Grammar.		



## SHORT-TERM CHINESE LANGUAGE AND CULTURE PROGRAM

### 1 MAIN COURSES AND CURRICULUM

The short-term language program contains courses of spoken Chinese, Chinese culture, special lectures and culture practice.

### 2 DURATION

2 weeks - 1 month

### 3 COURSE HIGHLIGHTS

- The courses will use advanced teaching methodology.
- The language courses mainly focus on daily life expressions for Chinese communication.
- The Chinese culture courses and culture practice contain multiple and various contents.
- The program focuses on both class learning and activities.

### 4 TEACHING OBJECT

This program will be separately arranged for short-term group, which starts with minimum 3 students.

CURRICULUM	EXPECTED RESULTS	CURRICULUM CONTENT
Language Course	Students will master the words and sentences related to the daily life and can communicate with Chinese people, after the basic spoken Chinese learning.	Spoken Chinese
Special Lecture	Students will learn key aspects of Chinese culture, education, society during the culture classes and discussions.	Lecture of Chinese Character Lecture of national life of China Lecture of Chinese Culture Chinese Movie and Music Appreciation
Culture Practice	Students will have the firsthand experience of culture, beautiful scenery, long history, tradition and custom of China through practical and participatory activities.	Calligraphy Paper cuttings Chinese Kongfu Culture practice of museum, visit to practice base, historical sites, etc.



# 03 CHINESE-MEDIUM PROGRAMS

## ◇ Chinese-Medium Undergraduate Programs ◇

No.	Schools Name	Disciplines	Majors
1	School of Highway	Road, Bridge and River-crossing Engineering	Road, Bridge and River-crossing Engineering
		Traffic engineering	Traffic Engineering
2	School of Automobile	Vehicle Engineering	Vehicle Engineering
		Energy and Power Engineering	Energy and Power Engineering
		Transportation	Transportation Engineering
			Logistics Engineering
			Automobile Service Engineering
3	School of Construction Machinery	Mechanical Engineering	Mechanical Engineering
			Mechanical Design Manufacture and Automation
			Mechanical and Electrical Engineering
			Industrial Design
4	School of Economics and Management	Logistics Management	Logistics Management
		Business Administration	Business Administration
			Marketing
			Accounting
			Financial Management
		Management Science and Engineering	Engineering Management
			Information Management and Information System
		Economics	Economic Statistics
			International Economics and Trade
5	School of Electronic and Control Engineering	Electrical Engineering and Its Automatio	Electrical Engineering and Its Automation
		Automation	Automation



No.	Schools Name	Disciplines	Majors
6	Information Engineering School	Electronic Information	Electronic Information Engineering
			Communication Engineering
		Computer	Computer Science and Technology
			Software Engineering
			Internet of Things Engineering
7	School of Geological Engineering and Geomatics	Surveying and Mapping	Engineering Surveying and Mapping
			Science and Technology of Remote Sensing
			Geographical Information Science
		Geological Engineering	Geological Engineering
		Geophysics	Surveying Technology and Engineering
			Geophysics
8	School of Science and Resources	Geology	Safety Engineering
			Geology
			Mineral Resource Exploration Engineering
		Land Resource Management	Mineral Process Engineering
		Land Improvement Engineering	Land Resource Management
9	School of Civil Engineering	Civil Engineering	Land Improvement Engineering
			Civil Engineering
			Building Environment and Energy Application Engineering
			Water and Wastewater Science & Technology Engineering
10	School of Environmental Sciences and Engineering	Engineering Cost	
		Chemical Engineering and Technology	Chemical Engineering and Technology
		Environmental Science and Engineering	Environmental Engineering
			Environmental Science
		Water Conservancy and Hydraulic Engineering	Water Conservancy and Hydropower Engineering
			Hydrology and Water Resources Engineering
			Groundwater Science and Engineering



No.	Schools Name	Disciplines	Majors
11	School of Architecture	Architecture	Architecture
			Urban-Rural Planning
		Environmental Design	Environmental Design
12	School of Materials Science and Engineering	Materials	Material Science and Engineering
			Inorganic Nonmetazllic Materials Engineering
			Macromolecular Materials and Engineering
			Material Processing and Control
13	School of Politics & Administration	Law & Legal Studies	Science of Law
		Public Administration	Administration Management
			Pubic Administration
14	Literary Arts and Communication School	Literature of Theatre Film & Television	Literature of Theatre Film & Television
			Broadcast and Television Directing
		Journalism & Communication	Journalism
			Advertising
			Chinese Language and Literature
15	School of Sciences	Engineering Mechanics	Engineering Mechanics
		Mathematics	Mathematics and Applied Mathematics
			Information and Computing Science
16	School of Foreign Studies	English	English
		Japanese	Japanese
17	Department of Physical Education	Guidance and Management of Social Sports	Guidance and Management of Social Sports
18	Department of Marxism	Ideological and Political Education	Ideological and Political Education







## Admissions Requirements

1. 18-50 years old, good health.
2. High school graduate with good record or equivalent certificate. Those who have not graduated from high school, please submit a pre-graduation certificate, or a testimonial which shows your expected graduation time.
3. Language requirements for Chinese-Medium Programs:  
HSK level 4 or have studied Chinese in CAU for one year and passed the exam.
4. Language requirements for English-Medium Programs:
  - TOEFL IBT 68 or above;
  - IELTS 5.5 or above;
  - Other equivalent English language qualifications.
5. Applicants who seek exemption from submitting one of the above English Language competency certificates for English-Medium Programs must show that they are:
  - a citizen or permanent resident of an English speaking country (including countries with English as the official language, common language or native language).

### Remarks:

- **APPLICATION DEADLINE:** Before 30 June each year.
- **STUDY STARTING TIME:** September of each year.
- **APPLICATION PROCEDURE:** Please refer to the last page of this brochure.
- **NOTES:** The names of majors and schools and their affiliations are subject to CAU's latest documents.



## ◇ Chinese-Medium Master Programs ◇

No.	Schools Name	Majors	Research Field
1	School of Highway	Civil Engineering	Bridge Engineering
			Geotechnical Engineering
			Tunnel Engineering
			Disaster Prevention and Mitigation Engineering
		Transportation Engineering	Subgrade and Pavement Engineering
			Route Engineering
			Transportation Planning and Management
2	School of Automobile	Vehicle Engineering	Vehicle Engineering
		Power Engineering and Engineering Thermophysics	Power Machinery and Engineering
			Fluid Machinery and Engineering
			Refrigeration and Microtherm Engineering
		Transportation Engineering	Transportation Planning and Management
			Logistics Engineering and Management
			Use of carrier tools Engineering
3	School of Construction Machinery	Mechanical Engineering	Mechanical Manufacturing and Automation
			Mechatronic Engineering
			Mechanical Design and Theory
			Engineering Machinery



长安大学  
CHANG'AN UNIVERSITY



No.	Schools Name	Majors	Research Field
4	School of Economics and Management	Applied Economics	Industry Economics
			Economic Statistics
			Finance
		Transportation Engineering	Transportation Planning and Management
			Logistics Engineering and Management
			Highway Economy and Management
			Informationization of Highway Traffic
		Management of Science and Engineering	Management of science and engineering
		Business Administration	Business Administration
5	School of Electronic and Control Engineering	Electrical Engineering	Electrical Engineering
		Control Science and Engineering	Control Theory and Control Engineering
			Testing Technology and Automation Devices
			Systems Engineering
			Module Identification and Intelligence System
			Navigation, Guide and Control
		Transportation Engineering	Traffic Information Engineering and Control
			Information Management and Information Systems
6	Information Engineering School	Information and Communication Engineering	Communication and Information Systems
			Signal and Information Processing
		Computer Science and Technology	Computer Systems Organization
			Computer Software and Theory
			Computer Applications Technology
		Software Engineering	Software Engineering
		Cyberspace Security	Cyberspace Security
		Transportation Engineering	Traffic Information Engineering and Control
			Intelligent Transportation Information System Engineering

No.	Schools Name	Majors	Research Field
7	School of Geological Engineering and Geomatics	Geophysics	Solid Earth Physics
			Space Physics
			Resources and Underground Geophysics
		Civil Engineering	Geotechnical Engineering
			Disaster Prevention and Mitigation Engineering
		Surveying and Mapping	Geodesy and Survey Engineering
			Photogrammetry and Remote Sensing
			Cartography and Geographic Information Engineering
			Resource and Environmental Remote Sensing
		Geological Resources and Geological Engineering	Geodetection and Information Technology
			Geological Engineering
			Geological Disaster Science and Engineering
		Safety Science and Engineering	Safety Science and Engineering
8	School of Science and Resources	Geography	Physical Gography
			Cartography and Geography Information System
		Geology	Mineralogy petrology gitology
			Geochemistry
			Paleontology and Stratigraphy
			Structural Geology
			Quaternary Geology
			Geo-information System
		Soil Engineering Science	Soil Engineering Science
		Geological Resources and Geological Engineering	Mineral Resources Survey and Exploration
			Oil and Gas Field Geology and Development



No.	Schools Name	Majors	Research Field
9	School of Civil Engineering	Civil Engineering	Geotechnical Engineering
			Disaster Prevention and Mitigation Engineering
			Construction and Management of Civil Engineering
			Structural Engineering
			Municipal Engineering
			Heating,Gas Supply,Ventilating and Air Conditioning Engineering
10	School of Environmental Sciences and Engineering	Hydraulic Engineering	Hydrology and Water Resources
			Groundwater Science and Engineering
			Hydraulic Structure Engineering
			Hydraulic and Hydro-Power Engineering
			Hydraulics and River Dynamics
		Chemical Engineering and Technology	Chemical Engineering and Technology
		Environmental Science and Engineering	Environmental Science
			Environmental Engineering
			Environmental Geology
		Hydraulic Engineering	Hydrogeology
			Surface Hydraulic
		Environmental Engineering	Environmental Engineering
11	School of Architecture	Urban and Rural Planning	Urban and Rural Planning
		Landscape Architecture	Landscape Architecture
12	School of Materials Science and Engineering	Materials Science and Engineering	Materials Physics and Chemistry
			Materialogy
			Materials Processing Engineering
			Materials for Mechanical Engineering
			Road Materials Science and Engineering

No.	Schools Name	Majors	Research Field
13	School of Politics & Administration	Law	Law
		Public Management	Administration Management
			Public Policy
			Educational Administration
14	School of Sciences	Mathematics	Fundamental Mathematics
			Computational Mathematics
			Probability Theory & Mathematical Statistics
			Applied Mathematics
			Operational Research and Cybernetics
		Statistics	Statistics
		Mechanics	General and Fundamental Mechanics
			Solid Mechanics
			Engineering Mechanics
			Computational Structural Mechanics
15	School of Foreign Studies	Foreign Language Literature	Foreign Language Literature
			Country and Regional Studies
			Comparative Literature and Cross-cultural Research
16	Literary Arts and Communication School	Art	Art
17	School of Marxist	Philosophy	Marxist Philosophy
			Chinese Philosophy
			Philosophy of Science and Technology
		Marxist theory	Basic Principles of Marxism
			Research on Chinese Marxism
			Education in Ideology and Politics
			Research on the Basic Problem of Modern and Contemporary Chinese History





## Admissions Requirements

1. Under 50 years old, good health.
2. Bachelor's degree diploma and transcripts with good record.
3. Language requirements for Chinese-Medium Programs:  
HSK Band 4 with scores above 180 or have studied Chinese in CAU for one year and passed the exam.
4. Language requirements for English-Medium Programs:
  - TOEFL IBT 80 or above;
  - IELTS 6.0 or above;
  - Other equivalent English language qualifications.
5. Applicants who seek exemption from submitting one of the above English Language competency certificates for English-Medium Programs must show that they are:
  - a citizen or permanent resident of an English speaking country (including countries with English as the official language, common language or native language).
6. Two recommendation letters from professors or associate professors.

### Remarks:

- **APPLICATION DEADLINE:** Before 30 June each year.
- **STUDY STARTING TIME:** September of each year.
- **APPLICATION PROCEDURE:** Please refer to the last page of this brochure.
- **NOTES:** The names of majors and schools and their affiliations are subject to CAU's latest documents.



## Chinese-Medium Ph.D Programs

No.	Schools Name	Majors	Research Field
1	School of Highway	Geotechnical Engineering	Geotechnical Engineering
		Disaster Prevention and Mitigation Engineering	Disaster Prevention and Mitigation Engineering
		Bridge and Tunnel Engineering	Bridge and Tunnel Engineering
		Highway and Railway Engineering	Highway and Railway Engineering
		Transportation Planning and Management	Transportation Planning and Management
		Transportation Engineering	Transportation Engineering
2	School of Automobile	Vehicle Engineering	Vehicle Engineering
		New Energy and Energy Conservation Projects for Vehicles	New Energy and Energy Conservation Projects for Vehicles
		Transportation Planning and Management	Transportation Planning and Management
		Use of Carrier Tools Engineering	Use of Carrier Tools Engineering
		Logistics Engineering and Management	Logistics Engineering and Management
3	School of Construction Machinery	Mechanical Engineering	Mechanical Manufacture and Automation
			Mechatronic Engineering
			Mechanical Design and Theory
			Engineering Machinery
4	School of Economics and Management	Transportation Planning and Management	Transportation Planning and Management
		Logistics Engineering and Management	Logistics Engineering and Management
5	School of Electronic and Control Engineering	Traffic Information Engineering and Control	Traffic Information Engineering and Control
		Intelligent Transportation Information System Engineering	Information Management and Information Systems
6	School of Information Engineering	Traffic Information Engineering and Control	Traffic Information Engineering and Control
		Intelligent Transportation System and information system engineering	Information Management and Information Systems
7	School of Geological Engineering and Geomatics	Geophysics	Solid Earth Physics
			Space Physics
			Resources and Underground Geophysics
		Geotechnical Engineering	Geotechnical Engineering
		Disaster Prevention and Alleviation Engineering and Protection Engineering	Disaster Prevention and Alleviation Engineering and Protection Engineering
		Construction Safety Engineering	Construction Safety Engineering
		Surveying and Mapping	Geodesy and Survey Engineering
			Photogrammetry and Remote Sensing
			Cartography and Geographic Information Engineering
			Resource and Environmental Remote Sensing





No.	Schools Name	Majors	Research Field
7	School of Geological Engineering and Geomatics	Geological Resources and Geological Engineering	Geodetection and Information Technology
			Geological Engineering
			Geological Disaster Science and Engineering
8	School of Science and Resources	Geology	Mineralogy petrology gitology
			Geochemistry
			Paleontology and Stratigraphy
			Structural Geology
			Quaternary Geology
		Georelational Information System	Georelational Information System
		Soil Engineering Science	Soil Engineering Science
9	School of Civil Engineering	Mineral Resources Survey and Exploration	Mineral Resources Survey and Exploration
		Oil and Gas Field Geology and Development	Oil and Gas Field Geology and Development
		Geotechnical Engineering	Geotechnical Engineering
		Structural Engineering	Structural Engineering
		Municipal Engineering	Municipal Engineering
10	School of Environmental Sciences and Engineering	Heating,Gas Supply,Ventilating and Air Conditioning Engineering	Heating,Gas Supply,Ventilating and Air Conditioning Engineering
		Disaster Prevention and Mitigation Engineering	Disaster Prevention and Mitigation Engineering
		Hydraulic Engineering	Hydrology and Water Resources
			Hydraulics and River Dynamics
			Hydraulic Structure Engineering
			Water Conservancy and Hydro-power Engineering
			Groundwater Science and Engineering
			Ecological Hydrology
		Environmental Science and Engineering	Environmental Science
			Environmental Engineering
			Environmental Geology
			Traffic Environment and Safety Technology
11	School of Architecture	Urban and Rural Construction of Urban Environmental Engineering	Urban and Rural Construction of Urban Environmental Engineering
12	School of Materials Science and Engineering	Materials of Mechanical Engineering	Materials of Mechanical Engineering
		Road Material Science and Engineering	Road Material Science and Engineering
13	School of Sciences	Computational Structural Mechanics	Computational Structural Mechanics
14	School of Politics & Administration	Environment and Social Development	Environment and Social Development

## Admissions Requirements

1. Under 50 years old, good health;
2. Master's degree diploma and transcripts with good record.
3. Language requirements for Chinese-Medium Programs:  
HSK Band 4 with scores above 180 or have studied Chinese in CAU for one year and passed the exam.
4. Language requirements for English-Medium Programs:
  - TOEFL IBT 80 or above;
  - IELTS 6.0 or above;
  - Other equivalent English language qualifications.
5. Applicants who seek exemption from submitting one of the above English Language competency certificates for English-Medium Programs must show that they are:
  - a citizen or permanent resident of an English speaking country (including countries with English as the official language, common language or native language).
6. Two recommendation letters from professors or associate professors.

### Remarks:

- **APPLICATION DEADLINE:** Before 30 June each year.
- **STUDY STARTING TIME:** September of each year.
- **APPLICATION PROCEDURE:** Please refer to the last page of this brochure.
- **NOTES:** The names of majors and schools and their affiliations are subject to CAU's latest documents.





# 04 ENGLISH-MEDIUM PROGRAMS

## ◇ English-Medium Undergraduate Programs ◇

No.	School Name	Discipline	Major
1	School of Construction Machinery	Mechanical Engineering	Mechanical Engineering
2	School of Economics and Management	International Economics and Trade	International Economics and Trade
3	Information Engineering School	Electronic Information	Electronic Information Engineering
4	School of Science and Resources	Geology	Mineral Resource Exploration Engineering
5	School of Civil Engineering	Civil Engineering	Civil Engineering

## ◇ English-Medium Master Programs ◇

No.	School Name	Major	Research Field
1	School of Highway	Communication and Transportation Engineering	Subgrade and Pavement Engineering
		Civil Engineering	Bridge Engineering
			Geotechnical Engineering
			Tunnel Engineering
2	School of Construction Machinery	Mechanical Engineering	Mechanical Manufacturing and Automation
			Mechatronic Engineering
			Mechanical Design and Theory
			Engineering Machinery
3	School of Economics and Management	Business Administration	Business Administration
			Accounting
			Tourism Management
		Logistics Engineering	Logistics Planning and Management
			Logistics Enterprise Management
		Applied Economics	Science of Banking

No.	School Name	Major	Research Field
4	School of Electronic and Control Engineering	Communication and Transportation Engineering	Traffic Information Engineering and Control
		Electrical Engineering	Electric Machines and Electric Apparatus
			Power System and Its Automation
			Power Electronics and Power Drives
			Building Electrical Appliances and Intelligent Technology
		Control Science and Engineering	Control Theory and Control Engineering
			Pattern Recognition and Intelligent System
			Intelligent Detection and Automation Equipment
			Intelligent Perception and Computing
			Robot and Artificial Intelligence
5	Information Engineering School	Information and Communication Engineering	Broadband Wireless Communication Theory and Technology
			Key Technologies for Information Security and Communication in vehicular network
			Smart Road Big Data Analysis and Intelligent Detection Technology
			Electromagnetic Detection and Information Processing Technology
		Computer Science and Technology	Intelligent Computing and Machine Vision
			Distributed Sensing and Collaborative Computing
			Cloud Computing and Big Data
			Virtual Reality and Human-Computer Interaction
		Communication and Transportation Engineering	Traffic Information Engineering and Control
		Software Engineering	Information Management and Information Systems
			Software Architecture for Big Data Processing
		Cyberspace Security	Software Engineering Method of Traffic Service Computing
6	School of Geological Engineering and Geomatics	Geophysics	Cryptography Theory and Its Application
			Transportation Internet of Things Security
			Network Behavior Security
		Civil Engineering	Solid Earth Physics
			Space Physics
			Resources and Deep Geophysics
		Surveying and Mapping	Geotechnical Engineering
			Geodesy and Survey Engineering
			Cartography and Geographic Information Engineering
		Safety Science and Engineering	Photogrammetry and Remote Sensing
			Resource and Environmental Remote Sensing
			Geological Environment and Engineering Safety
7	School of Science and Resources	Geography	Underground Space Safety
		Geology	Engineering Thermal Safety and Its Protection
			Safety System Engineering
			Physiography
			Cartography and Geographic Information System
			Mineralogy, Petrology, Mineral Deposit Geology
			Geochemistry
			Paleontology and Stratigraphy
			Tectonics Geology
			Geo-information System





No.	School Name	Major	Research Field
7	School of Science and Resources	Geological Resources and Geological Engineering	Mineral Survey and Exploration
			Geology and Development of Oil and Gas Field
8	School of Civil Engineering	Civil Engineering	Geotechnical Engineering
			Structural Engineering
			Disaster-Prevention & Reduction Engineering & Protection Engineering
9	School of Architecture	Architecture	Architectural Design
			Urban Design
			Architectural Technical Design
		Urban and Rural Planning	Theory and Method of Urban and Rural Planning
			History of Urban and Rural Development and Heritage Protection
10	School of Environmental Sciences and Engineering	Chemical Engineering and Technology	Chemical Engineering and Technology
		Environmental Science and Engineering	Environmental Science
			Environmental Engineering
			Environmental Geology
		Hydraulic Engineering	Hydrology and Water Resources
			Groundwater Science and Engineering
			Water Conservancy and Hydropower Engineering
			Hydraulics and River Dynamics
11	School of Automobile	Mechanical Engineering	Vehicle Engineering
		Power Engineering and Engineering Thermophysics	Transportation New Energy and Car Cleaning Technology
			Heat Management of New Energy Automobile Battery
			Combustion and Emission Control of Combustion Engine
		Traffic Engineering	Loding Tools Application Engineering



## ◇ English-Medium Ph.D Programs ◇

No.	School Name	Major	Research Field
1	School of Highway	Road and Railway Engineering	Subgrade and Pavement Engineering
		Bridge and Tunnel Engineering	Bridge Engineering
			Tunnel Engineering
		Geotechnical Engineering	Geotechnical Engineering
2	School of Construction Machinery	Mechanical Engineering	Mechanical Manufacture and Automation
			Mechatronic Engineering
			Mechanical Design and Theory
			Engineering Machinery
3	School of Economics and Management	Logistics Engineering and Management	Logistics Engineering and Management
4	School of Electronic and Control Engineering	Traffic Information Engineering and Control	Traffic Information Engineering & Control
5	School of Information Engineering	Transportation Engineering	Traffic Information Engineering & Control
			Information Management and Information Systems
6	School of Geological Engineering and Geomatics	Geophysics	Solid Earth Physics
			Space Physics
			Resources and Underground Geophysics
		Civil Engineering	Geotechnical Engineering
		Geological Resources and Geological Engineering	Geological Engineering
			Geodetection and Information Technology
		Surveying and Mapping	Geodesy and Survey Engineering
			Cartography and Geographic Information Engineering
			Photographical Survey and Remote Sensing
			Resource and Environmental Remote Sensing
7	School of Science and Resources	Geology	Mineralogy, Petrology, Mineral Deposit Geology
			Geochemistry
			Paleontology and Stratigraphy
			Tectonics Geology
			Georelational Information System



No.	School Name	Major	Research Field
7	School of Science and Resources	Geological Resources and Geological Engineering	Mineral Resources Survey and Exploration
			Oil and Gas Field Geology and Development
8	School of Civil Engineering	Civil Engineering	Geotechnical Engineering
			Structural Engineering
9	School of Environmental Sciences and Engineering	Environmental Science and Engineering	Environmental Science
			Environmental Engineering
		Hydraulic Engineering	Sustainable Development and Utilization of Water Resources in Arid Areas
			Groundwater and Environment in Arid Area
			Hydrological Ecology and Water Security in Arid Areas
			Hydraulic and Hydro-Power Engineering
10	School of Automobile	Mechanical Engineering	Vehicle Engineering
		Traffic Engineering	Loding Tools Application Engineering





# 05 SCHOLARSHIP

## ENTRANCE SCHOLARSHIP

### Chinese Government Scholarship(Chinese University Program)

#### Eligibility

1. Applicants must be non-Chinese citizen and be in good health.
2. Education background and age limit:
  - <1> Applicants for Bachelor's Degree program must have high school degree and be under the age of 25.
  - <2> Applicants studying to earn a Master's degree must have a Bachelor's degree and be under the age of 35.
  - <3> Applicants studying to earn a Doctorate degree must have a Master's degree and be under the age of 40.

#### 3. Requirements for language:

Programs	Requirements
Chinese-Medium Programs	HSK Band 4 with scores above 180
English-Medium Programs	<ul style="list-style-type: none"><li>• TOEFL IBT 68 or above; • IELTS 5.5 or above;</li></ul> Condition of exemption of submitting English level certificates: English-speaking students (Countries with English as the official language, common language or native language).

Remark: The students who have Chinese-Medium Programs can be provided with Chinese language course for one year.

#### Content and Criteria of Scholarship

1. Exempt from registration fee, tuition and fee for accommodation;
2. Monthly Living allowance:
  - <1> Bachelor's degree students: RMB2,500.
  - <2> Master's degree students: RMB 3,000.
  - <3> Doctorate degree students: RMB 3,500.
3. Comprehensive Medical Insurance for international students in China.

#### Majors

Partial majors are available to apply. Please look through our website.







## Application Procedure

1. Applicants check out relevant major of our university: [www.ies.chd.edu.cn](http://www.ies.chd.edu.cn)
2. Apply at: <http://www.csc.edu.cn/studyinchina> or [www.campuschina.org](http://www.campuschina.org) Print two copies of the application form.
  - Agency No: 10710
  - Program Category: Type B
3. Apply at: <http://admission.chd.edu.cn> Print two copies of the application form.
4. Post the following application materials together to Chang'an University (CHD):
  - <1> 《CSC Application Form》 (Chinese or English).
  - <2> 《Application Form for Foreign Students to CHD》 (Chinese or English).
  - <3> Highest diploma (original copy and translated photocopy). The applicant must submit On-study Certificate issued by his/her university, if he/she is an on-campus student.
  - <4> Relevant notarized transcripts for those applying for master's or doctorate degree programs (original copy and translated photocopy).
  - <5> A study or research plan in Chinese or in English (no less than 500 words).
  - <6> Academic recommendation. Two reference letters in Chinese or English from professors or associate professors.
  - <7> Foreigner Physical Examination Form must be filled in English. The results are valid for six months.
  - <8> An acceptance letter from the supervisor for doctorate degree programs.
  - <9> Applicants who apply for Chinese-Medium Programs submit HSK transcripts (Those who need one-year Chinese remediation don't need to submit them).
  - <10> Applicants who apply for English-Medium Programs submit transcripts of TOEFL IBT or IELTS.
  - <11> Application Deadline: Please look through our website.

### Attention:

- The materials above shall be provided only in Chinese or English and the certificates and transcripts must be notarial documents.
- Please bind the above materials in the upper left corner in the order listed above. (In duplicate)
- No matter being admitted or not, the application materials will not be returned.

## Admission Procedure

1. First-round candidates will be published on the website of International Education School and the E-mail box of online registration platform of Chang'an University for international guest students before May 31.
2. Successful applicants will be shortlisted and published on the website of International Education School and the E-mail box of online registration platform of Chang'an University for international guest students before June 30.
3. The Office of International Student Recruitment will post Admission Notices and Visa application forms (JW201) to successful applicants in early July.

## Chinese Government Scholarship(Bilateral Program)

### Eligibility

1. Applicants must be non-Chinese national and be in good health.
2. Applicants have no other scholarships from China government.
3. Education background and age limit:
  - <1> Applicants for Bachelor's Degree program must have high school degree and be under the age of 25.
  - <2> Applicants studying to earn a Master's degree must have a Bachelor's degree and be under the age of 35.
  - <3> Applicants studying to earn a Doctorate degree must have a Master's degree and be under the age of 40.
  - <4> Applicants for general scholars must have high school degree certified by MOE and be under age of 45.
  - <5> Applicants for senior scholars must have Master's degree certified by MOE and be associate professor or higher and under age of 50.
4. Requirements for language:

Programs	Requirements
Chinese-Medium Programs	HSK Band 4 with scores above 180
English-Medium Programs	<ul style="list-style-type: none"> <li>● TOEFL IBT 68 or above;    ● IELTS 5.5 or above;</li> </ul> Condition of exemption of submitting English level certificates: English-speaking students (Countries with English as the official language, common language or native language).
Remark: The students who have Chinese-Medium Programs can be provided with Chinese language course for one year.	

### Content and Criteria of Scholarship

1. Exempt from registration fee, tuition and fee for accommodation;
2. Monthly Living allowance:
  - <1> Bachelor's degree students: RMB2,500.
  - <2> Master's degree students: RMB 3,000.
  - <3> Doctorate degree students: RMB 3,500.
  - <4> General scholars: RMB 3,000.
  - <5> Senior Scholars: RMB 3,500.
3. Comprehensive Medical Insurance for international students in China.

### Major

All majors of Chang'an University are available to apply.

### Where and When to Apply

Apply to the dispatching authorities of your country or local Chinese embassy or consulate.  
Please consult the dispatching authorities for the specific deadline of each year.





## Application Procedure

1. Apply to the dispatching authorities or local Chinese embassy for overseas study of your home country for Chinese Government Scholarship ( CGS ) opportunity;
2. Contact the admissions Office of the International Education school, and obtain the pre-admission notice issued by the school.
3. Complete the online application procedure at CGS Information Management System for International Students  
(Visit <http://www.csc.edu.cn/studyinchina> or <http://www.campuschina.org> and click "Application Online" to log in),  
submit online the completed Application Form for Chinese Government Scholarship, and print a hard copy.  
You should consult the dispatching authorities for overseas study of your home country for Instructions of CGS Information Management System for International Students and Agency Number;
4. Chang'an University prepares admission materials such as formal admission notices and visa application forms for Scholarship recipients (JW202)

### NOTE :

- Only applications of recommended candidates from dispatching authorities will be considered.

## Shaanxi Automobile Holding SHACMAN International Student Scholarship

In order to expand the overseas influence of Shaanxi automobile Holding group, attract and encourage more outstanding foreign students to study in China, Shaanxi Automobile Holding Group has set up "Shaanxi Automobile Holding SHACMAN International Student Scholarship" to subsidize outstanding foreign students.

### The applicant's qualifications

Non-Chinese citizens, in good health.

### Application process and materials

Refer to the last page.

### Award Standard

1. Exempt from tuition fee (For the first year).
2. Exempt from accommodation fee (For the first year).
3. Provide Comprehensive Medical Insurance for international students in China (For the first year).





## UNIVERSITY STUDENTS SCHOLARSHIP-PARTIAL SCHOLARSHIPS

### San Qin International Student Scholarship of Shaanxi Province

#### Applicant's qualification

1. Applicants must be registered self-funded full-time undergraduate, master, PhD international students who are in Grade 2 or above.
2. Applicants must have a favorable performance at school without any records of violating any laws of China or regulations in school.
3. Applicants should have great academic performance. The exam grades of the current academic year should be at least above the B level.
4. Students who have already been granted any scholarships such as Chinese Government Scholarship should not apply for this scholarship.

#### Categories and Criteria

Categories	Candidates	Criteria
A	PhD Student	25,000 yuan/year/person
B	Master Student	20,000 yuan/year/person
C	Undergraduate	13,000 yuan/year/person

#### Application Materials

1. Application form of the San Qin International Student Scholarship of Shaanxi Province.
2. Copies of passport and current visa.
3. Academic Transcripts in the current university.

#### Application Deadline

Refer to the website of the International Education School of Chang'an University.

### Excellent International Student in China Scholarship of Chang'an University

Chang'an University has founded "Excellent International Student in China Scholarship of Chang'an University" to finance the outstanding international students in our university to finish their studies. The multi-level scholarships are offered in cash.

#### Applicant's qualification

1. Applicants must be registered self-funded full-time undergraduate, master, PhD international students who are in Grade 2 or above.
2. Applicants must be well-behaved at school by complying with Chinese laws and regulations and school rules. They must be friendly to China and be in good manners and respect Chinese culture and customs.
3. Applicants must study hard and be excellent at the academic performance among the international students without flunks in any examinations of the academic year.
4. Applicants actively participate in various sports and social activities. They should care about others and love the collective.
5. Applicants must be honest without any records of violating any laws of China or regulations in school.



## Categories and Criteria

Categories	Criteria	Remark
The First Rank	10,000 yuan/year/person	Sports stars, literary stars, leadership stars, learning stars, volunteer stars, etc.
The Second Rank	5,000 yuan/year/person	
The Third Rank	2,000 yuan/year/person	

## Application Materials

1. Application form of the Excellent International Student in China Scholarship of Chang'an University.
2. Academic Transcripts in Chang'an University.
3. Copies of certificates of all kinds of awards and honors.

## Application Deadline

Refer to the website of the International Education School of Chang'an University.

## Shaanxi Automobile Holding SHACMAN International Student Scholarship

In order to expand the overseas influence of Shaanxi automobile Holding group, attract and encourage more outstanding foreign students to study in China, Shaanxi Automobile Holding Group has set up "Shaanxi Automobile Holding SHACMAN International Student Scholarship" to subsidize outstanding foreign students.

## Requirements

1. The full-time foreign undergraduate students, graduate students who are not in the first grade;
2. Those who are friendly to China, abide by Chinese laws and regulations, rules and regulations of the school, have good habits and civilized behavior, respect for Chinese culture;
3. Those who work hard, get excellent academic achievements, and pass all the examinations of the school year;
4. Those who take an active part in all kinds of recreational and sports activities and in social public welfare activities; who love the collectives and care for others;
5. Those that are honest, and have no illegal, undisciplined record.

## Award Quota and Standard

Students	Award	Reward Amount	Quota	Total Bonus
Sophomore, Junior, Senior, second&third year graduate student	The first prize	15000	5	75000
	The second prize	8000	10	80000
	Best practice award	10000	3	30000
Total			18	185000

## Scholarship Application Materials

1. Shanxi Automobile Holding SHACMAN International Student Scholarship Application Form (Undergraduate/ Postgraduate);
2. One copy of your passport;
3. The original copy of the academic transcript affixed with the official seal of the college;
4. One photocopy of all kinds of awards, publications, patents, scientific research achievements and other supporting materials of the previous academic year (the documents of publication, patents and scientific research achievements should be consistent with the application form).

## Application Deadline

Refer to International Education School's website notice.



# 06 TUITION STANDARDS

## Registration Fee

RMB400 (No matter be admitted or not, application fee will not refund.)

## Tuition

Items	Fees
Language Program	RMB 14000 for one academic year
Language Program	RMB 8000 for one semester
Language Program	RMB 2500 for one month
Undergraduate Program	RMB 16000 for one academic year
Master Program	RMB 21000 for one academic year
Ph.D. Program	RMB 30000 for one academic year

## Accommodation Fees

Apartment NO.	Accommodation Condition	Items
Benbu	NO.1 Public kitchen. Public laundry. Washroom. Bathroom. Air conditioner. Single bed. Book table. Wardrobe. Network interface.	600 RMB/month
	NO.2 Public kitchen. Public laundry. Washroom. Bathroom. Air conditioner. Single bed. Book table. Wardrobe. Network interface.	600 RMB/month
	NO.3 Public kitchen. Public laundry. Washroom. Bathroom. Air conditioner. Single bed. Book table. Wardrobe. Network interface.	600 RMB/month
	NO.4 Public kitchen. Public laundry. Washroom. Bathroom. Air conditioner. Single bed. Book table. Wardrobe. Network interface.	800 RMB/month
Weishui	NO.12 Public kitchen. Public laundry. Washroom. Bathroom. Air conditioner. Single bed. Book table. Wardrobe. Network interface.	600 RMB/month
	NO.18 Public kitchen. Public laundry. Washroom. Bathroom. Air conditioner. Single bed. Book table. Wardrobe. Network interface.	600 RMB/month

## Living Expenses

We estimate that a single student living in Xi'an will need RMB 12000-15000 for living expenses annually in addition to the tuition and accommodation fees. This amount includes food, clothes, transportation, communication, books and travels.

1. **Insurance:** RMB 800/year

2. **Foreigner Physical Examination:** RMB 600/year

3. **Application for Resident Permit:** RMB 400/year



# 07

## UNIVERSITY FACILITIES

### Library

There are three libraries in Chang'an University: the Northern Yard Library and the Eastern Yard Library in the southern campus and Yifu Library in the northern campus. All of them cover more than 54,000m<sup>2</sup> in total and contain over 5,100 seats for reading.

1. There is a collection of 2,658,800 volumes of domestic and foreign paper books and 1,320 kinds of printed newspapers and journals.
2. Thirty-six domestic and foreign databases are purchased, including 20 foreign databases, such as SCI, Elsevier, Nature, Springer, IEEE, EI and so on. Besides, more than 40 trial databases are available for free use.
3. Free wifi is accessible for readers everywhere in the libraries.

### Student Canteens

There are 18 canteens totally in the university covering more than 30,000m<sup>2</sup>, including 13 student canteens with one window offering western food and 5 Muslim canteens. They serve nearly 40,000 teachers and students.

1. The 18 canteens are located in four campuses where there is at least one Muslim canteen respectively, which is open to all foreign students.
2. The food provided is various, delicious and relatively cheap.

### Fitness Facilities

There is a modern and multi-functional gymnasium with courts inside for badminton, table tennis and so on in the main campus and another indoor gymnasium and a swimming pool in Weishui campus.

Besides, outdoor sports venues are located in different campuses and cover a total area of 90,584m<sup>2</sup>. Precisely, there are 3 track and field grounds, 5 football courts, 32 basketball courts, 15 volleyball courts, 215 ping-pong tables, 58 badminton courts, 29 tennis courts, one swimming pool, 6 exercise equipment grounds, one climbing wall and 3 korfbal courts.

### IT Facilities

1. Students can log in their university account to use free wifi in classrooms, dorms, libraries, playgrounds and many other places.
2. The main classrooms are all equipped with digital multimedia.
3. Foreign students are provided with professional modern language labs.

### Currency and Banking

Foreign currencies, such as British Pound, US Dollar, Euro, etc. can be exchanged for RMB.

1. There are Automated Teller Machines (ATMs) of Bank of China and Bank of Communications in the main campus. Branches of Bank of China, Bank of Communications, the Industrial and Commercial Bank of China and Construction Bank are nearby.
2. There are ATMs of Bank of China and Agricultural Bank of China in Weishui campus and ATMs of China Construction Bank nearby.

# 08

## APPLICATION PROCEDURE



### Application Materials:

Required documents: Please upload those documents in order to fulfill your application procedure. Each document has to be smaller than 1MB.

1. Certificates, diplomas and transcripts must be notarized copies. All of the documents should be translated into Chinese or English.
2. If you have previously studied at any Chinese university, please upload the Visa page of your passport and prepare a transfer letter which must includes your attendance record.





	China Language	Undergraduate	Master	Ph.D.	Ordinary & Advanced Studying
Passport Copy (Valid duration covers your study period at Chang'an University)	✓	✓	✓	✓	✓
Passport Photo (Within six months)	✓	✓	✓	✓	✓
HSK Certificate (For Chinese Medium Programs only)		✓	✓	✓	✓
English Test Result (TOEFL/IELTSR or any other English Proficiency Certificate, and only for English Medium Programs)		✓	✓	✓	✓
High School Diploma and Transcripts or A level		✓			
Bachelor Diploma and Transcripts			✓		
Master Diploma and Transcripts				✓	
Two Recommendation Letters (By a professor or associate professor)			✓	✓	
Personal Statement/Study Plan/Research Proposal			✓	✓	
Foreigner Physical Examination Form	✓	✓	✓	✓	✓
Certificate of No Criminal Record (Original, Chinese translation, Notarization by Chinese Embassy)	✓	✓	✓	✓	✓



Official WeChat  
Subscriptions



長安大學  
CHANG'AN UNIVERSITY

---

## International Education School

## International Education School

---

Address: Middle-section of Nan'er Huan Road  
Xi'an, ShaanXi Province, China  
Post code: 710064  
Contact: ZHANG Lei  
Tel: +86-29-82334270

Fax: +86-29-82334270  
Email: [apply@chd.edu.cn](mailto:apply@chd.edu.cn)  
Website: <http://www.ies.chd.edu.cn>